



C-Tech TSFP 2010T

TERRESTRIAL SIGNAL FINDER PROFESSIONAL

User Manual

Content

Product Description

1. Guide	1
1.1 Face Panel & Button	1
1.2 Power On/Off	3
1.3 Power Supply & Battery	3
2. Menu	3
2.1 Channel Scan	4
2.2 Channel Check	7
2.3 Multimedia	8
2.4 System Setup	10
3. Specification	13

Product Description

It is a battery powered hand held DVB-T terrestrial alignment meter demodulating DVB-T COFDM Signal. Its very convenient for installer to catch quick and accurate Alignment for Antenna to the best direction.

It's with microprocessor controller, reliable and stable performance. When it's turned on, channel picture, Signal Strength and Signal Quality will be showed on LCD Screen after you set up your local DVB-T Parameter. Also, it's with multichannel Signal indicator which is very helpful for alignment.

It supports BER, S/N, Signal Strength and signal lock sound.

It detects very faint signal, and supports antenna power OFF/5V/12V/15V/18V/24V selectable.

It's with auto-protection for LNB short-circuit.

It includes both AV IN and AV OUT for Camera, LCD...etc.

It's used with 12V Power Adaptor when you need to use external power.

It includes high capacity Lithium Battery 8.4V 3000mAh which works for more than 4 hours after its fully charged.

1. Guide

1.1 Face Panel & Button



No.	Name	Introduction
1	Signal Input	To connect it with external antenna
2	LCD Screen	To show menu and channel pictures...etc
3	Signal Lock Indicator Light	To lock signal when it lights
4	Charging Indicator Light	The light is on when its charging; Its off when charging is complete.
5	Power Indicator Light	The light is on when meter is turned on
6	F1 F2 F3 F4	Function Buttons
7	▲▼▲▶▶ OK	Arrow for Icon Moving. OK for Confirmation
8	MENU	To show main menu or return to previous menu
9	EXIT	To cancel selection or exit from current menu
10	0-9 Numerical Button	To input numerical for setting parameters
11	+/- Button	
12	B.Light	LCD Screen Switch
13	Mute	Sound Switch
14	TV/Radio	Switch between TV Channel and Radio Channel
15	M.INFO	Shortcut Button for Multichannel Display
16	INFO	To show parameter of current channel
17	USB Connector	Port for Upgrade or connecting to multimedia
18	Power Connection port	Port for connecting to external power supply
19	Power Switch	Power Switch for machine power
20	AV Ouput	AV Output
21	AV Input	AV Input

1.2 Power On/Off

To turn on the meter when Power Switch moves to I position

To turn off the meter when Power Switch moves to 0 position

Please turn off the meter to charge the meter in time when system information for showing low power popes up

1.3 Power Supply and Battery

Its used with 12V 1.5A Power Adaptor. It charges through external power when battery is out of power.

Its used with 8.4V 3000 AH Lithium Battery. It needs10 hours charging time by connecting power adaptor with external power or car charging. After its full'charge, it works for more than 5 hours (It also depends on the load of external antenna).

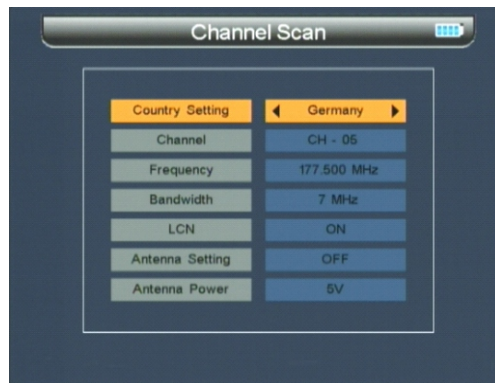
Notice: For initial charge, please make battery fully-charged(We suggest it charge for 5 hours).

2.Menu

Press "MENU " key to enter into main menu, and use Arrow keyto move icon, and then press "OK " key to select sub-menu.



2.1 Channel Scan



2.1.1 Country Setting

To select country to receive signal.

2.1.2 Channel

To select channel type to be received.

2.1.3 Frequency

To set frequency for receiving signal by inputting frequency value with numerical keys.

2.1.4 Bandwidth

To Select Bandwidth 6M/7M/8M based on your local region.

2.1.5 LCN

Select LCN ON or LCN Off.

2.1.6 Antenna Setting

To select antenna power ON/OFF.

2.1.7 Antenna Power

To select antenna power voltage (OFF/5V/12V/15V/18V/24V)

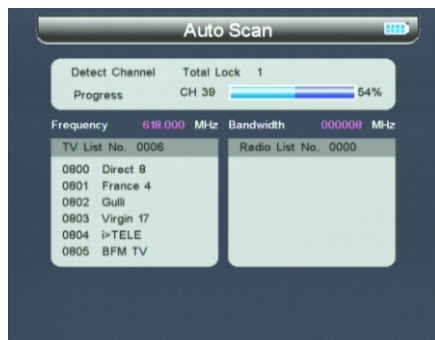
2.1.8

To set parameter, and press "OK" to enter into sub-menu.



2.1.8.1 Scan

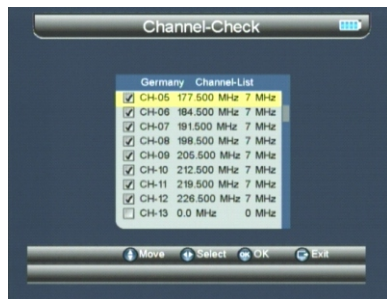
To scan all the channels of current frequency, and it auto-restores the scanned channels, and then return to previous menu.



2.1.8.2 Scan All

To scan all channels, and it auto-restores the scanned channels, and then return to previous menu.

2.2 Channel Check



2.2.1 Move

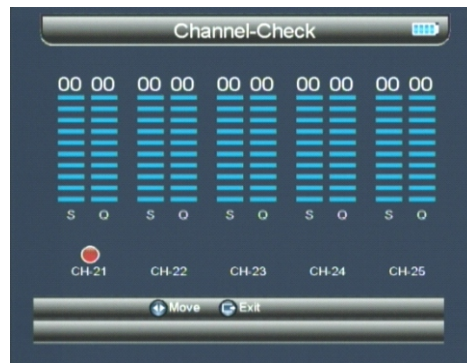
Press ▲▼ button to move Icon.

2.2.2 Select

Press ◀▶ button to local channel, and tick the box to select it.

2.2.3

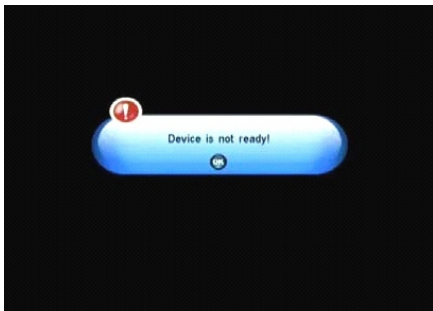
Press OK button to enter into multichannel display. Each screen display signal indicators of five channels, and press ◀▶ button to PGUP or PGDOWN.



2.3 Multimedia



For multimedia playing, the external flash stick must be inserted into USB port. Otherwise, it will pop up "Device is not ready" in the screen.



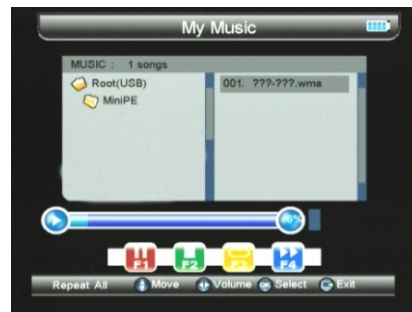
2.3.1 My Album

Review pictures with JPG/GIF/BMP format.

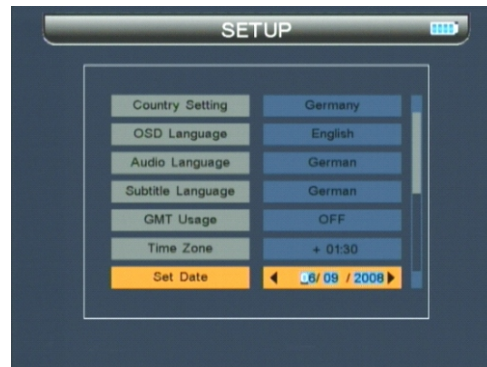


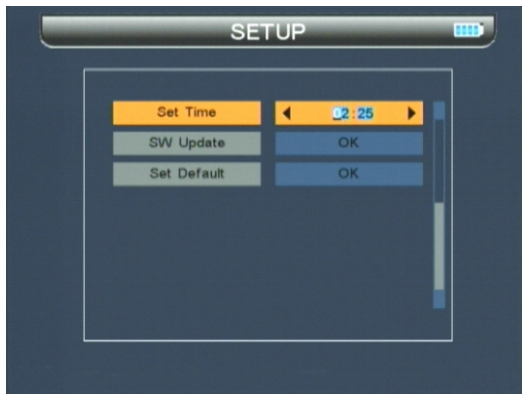
2.3.2 My Music

Play music with MP3/WMA format.



2.4 System Setup





2.4.1 Country Setting

Select country to receive TV channel. The preset channel parameters of different countries is used to make auto scan.

2.4.2 OSD Language

Set the On Screen Display Language.

2.4.3 Audio Language

Set the audio language for watching program.

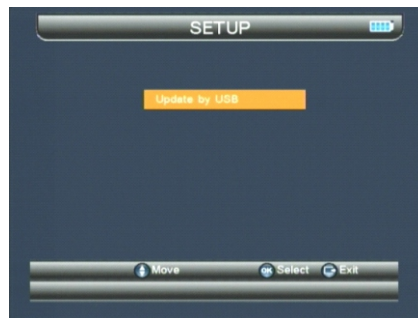
2.4.4 Subtitle Language

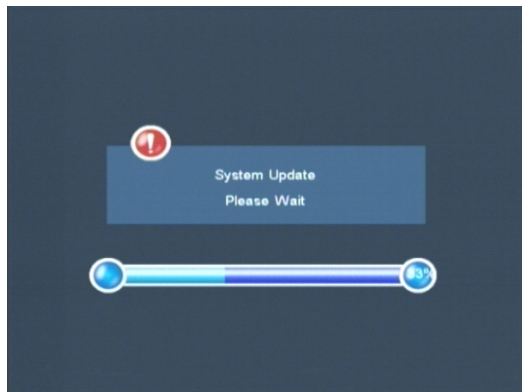
Set the language for displaying subtitle .

2.4.5 SW Update

To update SW or Data via USB port.

To insert the external flash stick (including updated SW) into USB port, and then enter into upgrade menu to select updated SW. It automatically returns after updating





2.4.6 Set Default

Press factory default " " to set default.

3. Specification

RF Input	Connector	IEC Female 9.5mm
	Frequency range	VHF and UHF
	Bandwith	8/7/6MHz
	Input impedance	75 ohm

Modulation	Modulation	COFDM
	Constellation	QPSK, 16QAM, 64QAM
	Transmission mode	2K, 8K
	Guard interval	1/2, 1/4, 1/8, 1/16, 1/32
	FEC	1/2, 2/3, 3/4, 4/5, 5/6, 7/8
CPU & Memories	Processor	32Bit RISC
	SDRAM	64M
	FLASH	16M
Video Decoder	MPEG 2	Main Profile@Main Level
	Date rate	Up to 15M bit/s
	Resolution	720*576, 720*480
	Video format	PAL/NTSC/SECAM
Audio Decoder	MPEG-2 Layer 1&2	
	Type	Mono
	Sampling rates	32, 44.1 and 48KHz
Serial data interface	Connctor	USB type
Power supply	Li-oN Battery	8.4V 3000mAH
	Supply voltage	12V 1.5A
	Charger	90-240V
Physical Specification	Size	155x 95x45 (mm)
	Weight	0.5Kg